



2020 Primary Runoff Election

Voting Guide for El Paso County

by **HOPE BORDER INSTITUTE**

EARLY VOTING

Monday, June 29 - Friday, July 10

EARLY VOTING LOCATIONS

Full list here - https://epcountyvotes.com/quick_links/early_voting

ELECTION DAY

Tuesday, July 14

ELECTION DAY POLL LOCATIONS

You must vote in your precinct on Election Day. Visit this [link](#) to enter your address to determine your site.





ABOUT THIS ELECTION

Voters in El Paso County can now hit the polls in the runoff election following the March 3 primary election. Candidates on the ballot did not receive the majority of votes cast to win the race outright and this election will decide between the two highest vote-getters. You can see the results of the March 3 primary election [here](#).

Since this is a primary, voters will be asked to vote as either a Republican or Democrat. Republicans will vote for two seats in the US House of Representatives while Democrats will vote for a US Senate seat, railroad commissioner, district judges, district attorney and county commissioner if you live in precinct 3. Winners of these races will face an opponent from the other party (if there is a candidate) in November when we also vote for president, mayor and city council.



APPLY FOR A BALLOT BY MAIL

In light of the coronavirus, the safest way to vote is to do so by mail. On June 26, the [US Supreme Court](#) rejected Texas Democratic Party's request to expand voting by mail to all Texas voters during the coronavirus pandemic. For this election, voting by mail is only accessible to a limited portion of the Texas voting population. To qualify to vote by mail, registered voters must be over 65, out of the county during early voting and election day, sick or disabled or confined in jail but eligible to vote.

People that meet those qualifications must apply

for a ballot first. [Download and print this application](#) to vote by mail or mail a letter requesting a ballot by mail including your name and address as listed on your voter registration card, the address where the ballot should be mailed, the election date and election name for which you are requesting a ballot including the party, a reason why you are eligible to vote by mail and your signature.



Requests must be received (not postmarked) by Thursday, July 2.

PRIMARY RUNOFF ELECTION FAQ'S

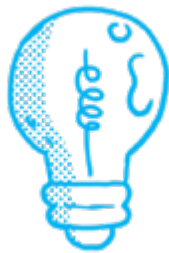


HOW DO I APPLY FOR A BALLOT BY MAIL?

- You request must be received (not postmarked) in the El Paso County Elections Office by Thursday, July 2. To qualify to vote by mail, registered voters must be over 65, out of the county during early voting and election day, sick or disabled or confined in jail but eligible to vote
- Download and print [this application to vote by mail](#) or mail a letter requesting a ballot by mail including your name and address as listed on your voter registration card, the address where the ballot should be mailed, the election date and election name for which you are requesting a ballot including the party, a reason why you are eligible to vote by mail and your signature

WHAT'S NEW TO ENSURE SAFE VOTING?

- Limited number of masks and hand sanitizer will be available at every polling place
- Election machines and lines will be marked with six feet between them
- Each voter can use a disposable stylus to mark their ballot
- Election workers will be using masks and face shields
- Curbside voting is available if a voter is physically unable to enter the polling site
- Wait times may be longer due to these accommodations so plan your trip accordingly



HOW CAN I PLAN MY TRIP TO THE POLLS?

- Plan your trip well ahead of time
- Decide if you will vote early from June 29 - July 10 or on Election Day - July 14
- Determine how you will get to your polling place
- Set a calendar reminder on your phone so you don't forget
- Review the sample ballot
- Learn about the candidates and the issues
- Encourage your family, friends and neighbors to vote safely
- Celebrate by downloading a digital "I Voted" frame on Facebook

HOW CAN I VOTE SAFELY DURING A PANDEMIC?

- Vote early to avoid crowds on election day
- Take and wear a mask over your nose and mouth
- Use hand sanitizer
- Avoid touching your face and eyes
- Keep a safe distance between yourself, election workers and the public
- Use the disposable stylus at the polls to cast your ballot
- Plan your trip to the polls well ahead of time

WHAT'S ON THE BALLOT?

Democratic Party Primary Runoff Election

- US Senator
- Railroad Commissioner
- District Judge, 388th Judicial Court
- District Attorney, 24th Judicial Court
- County Commissioner, Precinct 3

Republican Party Primary Runoff Election

- US Representative, District 16
- US Representative, District 23

WHAT IF I RUN INTO PROBLEMS WHEN I TRY TO VOTE?

Voters experiencing a problem at the polls can call a hotline set up by the Texas Election Protection Coalition, a group of nonpartisan NGO's, dedicated to helping people with questions about voting or how to respond to problems at the polls. Call 866-OUR-VOTE — English or 888-Ve-Y-Vota — Spanish and English.

WHAT IS THE ROLE OF A COUNTY COMMISSIONER?

The El Paso County Commissioners Court is made up of county commissioners and the county judge. Commissioners represent one of four precincts and are responsible for building and maintaining county roads and bridges within the precinct. The court adopts the county's budget and tax rate, authorizes contracts, and sets all salaries and benefits for county employees.



WHAT IS THE ROLE OF THE DISTRICT ATTORNEY?

A district attorney in Texas represents the state in prosecuting felony district criminal cases, works with law enforcement officers in the investigation of criminal cases, presents cases to the grand jury and represents victims of violence in protective orders and represents the state in removing children from abusive households.



WHAT IS THE ROLE OF THE RAILROAD COMMISSIONER?

The Railroad Commissioner oversees an agency that regulates the oil and gas industry including mining, propane and pipelines. Despite its name, the commission ceased regulating railroads in



2005. Commissioners serve overlapping six-year terms elected statewide.

WHAT IS THE ROLE OF A US SENATOR?

The United States Senate is the upper chamber of the legislature of the United States. There are 100 members of the Senate, two senators per state for staggered six-year terms. Senators form one

half of Congress and share the responsibility for all federal lawmaking with members of the US House of Representatives.

WHAT IS THE ROLE OF A MEMBER OF THE US HOUSE OF REPRESENTATIVES?

The House of Representatives is the lower chamber of the legislature of the United States. The House is made up of representatives from congressional districts allocated to each state based on the results of the U.S. Census. Representatives form one half of Congress and share the responsibility for all federal lawmaking with the Senate.

WHAT IS THE ROLE OF A DISTRICT JUDGE?

El Paso County has 13 district courts, each with a single judge, elected to a four-year term. District courts have original jurisdiction in all felony criminal cases, divorce cases, land title disputes, election contests, civil matters in which at least \$200 is disputed or claimed in damages, as well as other matters.





EARLY VOTING

Monday, June 29 - Friday, July 10

EARLY VOTING LOCATIONS

Full list here - https://epcountylvotes.com/quick-links/early_voting

ELECTION DAY

Tuesday, July 14

ELECTION DAY POLL LOCATIONS

You must vote in your precinct on Election Day.
Visit this [link](#) to enter your address to determine your site.

